

Addiction & Behavioral Health

(760) 499-3358



JANINE
ARBELAEZ, LMFT



ERNEST DE.
GUZMAN, MD



LYDIA FRANKLIN,
NP-C



PHACHARAWUT
JOE, MD



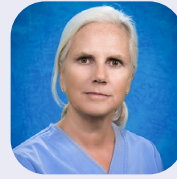
CLAY
MATEMAVI, NP-C

Cardiology

(760) 499-3277



GHASSAN
MOHSEN, MD



KELLY
DOTY, PA-C

Chiropractic

(760) 371-1300



GORDON LAM,
DC

Dental

(760) 499-3296



MICHAEL
CHONG, DDS



WILLIAM
CHUNG, DDS

Plastic Surgery

(760) 446-6404



MARIAN
B, FNP



ALI LASHGARI,
MD

Gastroenterology

(760) 446-0121



IHAB
BEBLAWI, MD



TIEN-CHUN
CHEN, MD



MARK
KOGAN, MD



WALEED
SHINDY, MD



DANA PAN,
MD

General Surgery

(760) 499-7210



ARJUN
CHANDRA, MD



VU DINH,
MD



ANDREW
MCCAGUE, DO

Orthopedics

(760) 446-8692



HEALTHY
DESAI, MD



SAMIR
NAYYAR, MD

Pain Mgmt.

(760) 446-7246



UDAYA
DESILVA, MD

Plastic Surgery

(760) 463-8930



THIEN TRANG
NGUYEN, MD

Podiatry

(760) 446-0121



GEORGE RIVELLO,
DPM

Interventional Imaging

(760) 499-7246



KRISHNA DAS,
MD



RAHUL
NAYYAR, MD



RAY ZHANG,
MD

Urgent Care

(760) 499-3800



JULIE
DE JESUS, NP



KELLY
DOTY, PA-C



ALAN
HAUN, PA-C

Urology

(760) 463-8930



RAAFAT
ATTALLA, PA



ELODI
DIELOBANZA, MD



MITCHELL
GOLDENBERG, MD



JEFFERY
LOH-DOYLE, MD



JAMAL NABHANI,
MD



ANNE
SCHUCKMAN, MD

Women's Health

(760) 499-3640



KALAMANI
DHARMA, MD



BILLIE GUERRA,
DO



MARIAH
PIETRANGELO, WHNP



ALESSA SILER,
FNP-C

Generalists

Adult Medicine & Pediatrics

(760) 499-3855 / (760) 446-6404



MINU AMBIKA,
MD
INTERNAL MEDICINE



CARMEN
BRIONES, MD
PEDIATRICS



KAREN
DAVIN, CPNP-PC
PEDIATRICS



RABIH HAMZEH,
MD
PEDIATRICS
PEDIATRIC CARDIOLOGY



JIXI HE,
MD
PEDIATRICS



JURIAN
KAUNANG, MD
PEDIATRICS



CAROLYN
LYON, PA
PHYSICIAN ASSISTANT



ANDREW
MODIC, MD
INTERNAL MEDICINE
PEDIATRICS



JENNIFER
PRINCE, DO
PEDIATRICS



KATHLEEN RANOLA,
MD
FAMILY MEDICINE



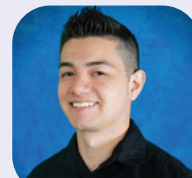
LESLIE
ROWLAND, FNP
ADULT MEDICINE



VICTORIA
SCHAUF, MD
PEDIATRICS
INFECTIOUS DISEASE



LOVE SINGH,
MD
FAMILY MEDICINE



EDGAR
SOLORIO, FNP-C
NURSE PRACTITIONER



JEFFERY
TUN, MD
INTERNAL MEDICINE



HOPE
WILDENBERG, MD
FAMILY MEDICINE



JANE YOON,
MD
PEDIATRICS